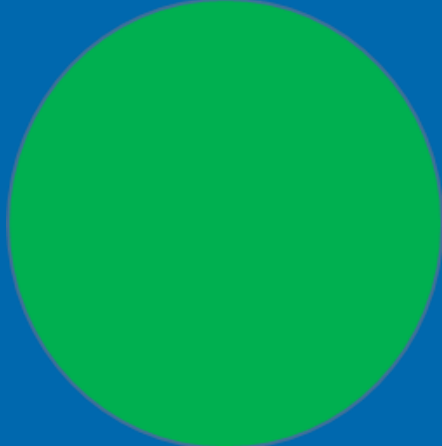


# Good to be Green

Simpson's Lane

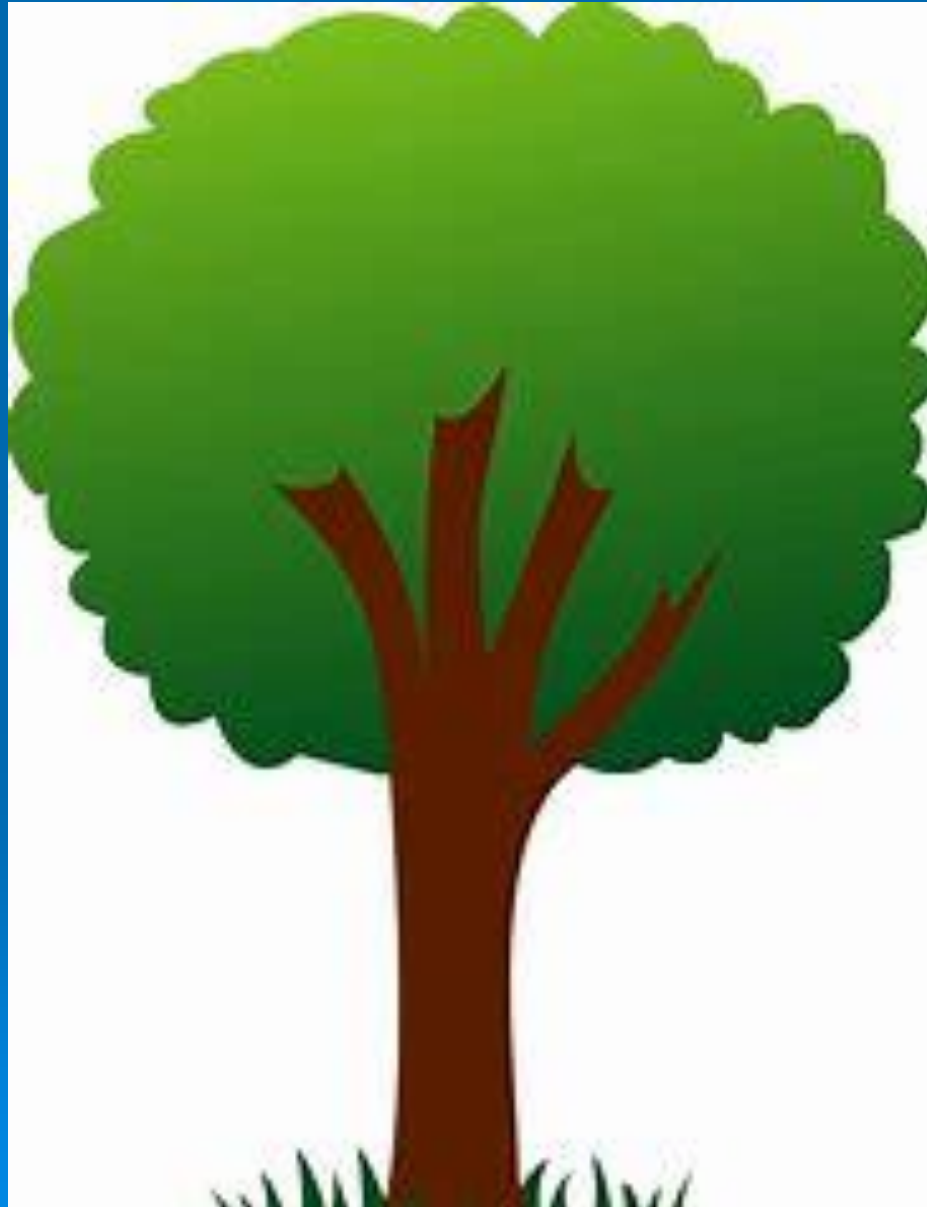




Good to be Green



Evergreen tree



# What does green look like?

## In the Classroom

- • In your seat, smart and ready to learn
- • Following instructions
- • Respecting each other and all the adults
- • Working hard
- • Trying your best

# What does green look like?

## Outside

- • Playing safely
- • Playing sensibly
- • Being a friend

# What does green look like?

In the dining hall

- • Indoor voices
- • Eating sensibly
- • Being kind and respectful
- • Being a friend

# What does green look like?

In the cloakroom

- • Coats on pegs
- • Sensible, calm behaviour
- • Indoor voices



# What does green look like?

At assembly time

- • Sitting still
- • Mouths are closed
- • Active listening
- • Facing forwards



# What does green look like?

On the corridor

- • Walking
- • Facing forwards
- • Mouths are closed